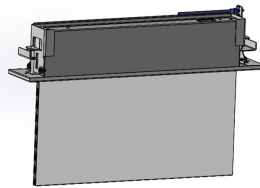
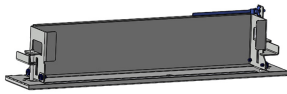


# SET DI MONTAGGIO PRIMO G30 DA INCASSO PG01 NERO TM-AKC.PG01B

Clicca sull'icona selezionata per scaricare il file:



n.: V1.2



Produttore **TM Technologie**  
global.category **accessori**  
Colore/Colore RAL **nero , RAL9005**  
global.pcbProjectNumber **PRIMO G 30**

Dimensioni nette **L x W x H** **360 mm x 67 mm x 84 mm**  
[±2 mm]

