

# ONTEC C C1 60 NM AT L TM-OC.C1ATN600L

Click on the selected icon to download the file:



No: 0125



No: 4397/2021  
Valid until:  
11.09.2026



No: 88-128463  
Valid until:  
25.05.2026



No:  
B\_BK\_60112\_0424\_2024  
Valid until:  
24.01.2030



No: 0125



No: 2291559.02-  
UAE  
Valid until:  
05.11.2026



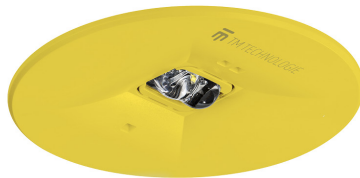
No: 0125



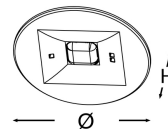
No: DIT\_001



No: V1.14



Producer	<b>TM Technologie</b>
Application	<b>escape route lighting</b>
Family	<b>ONTEC C</b>
Colour/Colour - RAL	<b>yellow , RAL1016</b>
Version	<b>autotest</b>
Operating mode	<b>NM</b>
Duration time	<b>1 h</b>
Protection degree	<b>IP20</b>
Impact protection degree	<b>IK03</b>
Appliance classes	<b>II</b>
Material	<b>plastic</b>
Installation method*	<b>flush-mounted, ceiling</b>
Luminous flux emergency	<b>297 lm</b>
Light source	<b>LED</b>
Maximum light power	<b>2.4 W</b>
Active power	<b>1.2 W</b>
Nominal voltage AC	<b>210-250 V</b>
LED lifetime	<b>50000 h</b>
Colour temperature	<b>5700 K</b>
Minimum temperature	<b>+10 °C</b>
Maximum temperature	<b>+35 °C</b>
Battery	<b>LiFePO4/C (LN) 3.2V 1.5-1.6Ah</b>
Warranty (body, electronics, light source)	<b>36 months</b>
Net dimensions <b>H x Ø</b> [±2 mm]	<b>14 mm x 90 mm</b>





2,5	9,5	21	-	-
3	11	24	-	-
4	13	29	-	-
5	13,5	32	-	-
6	10,5	34	-	-
7	5	32	-	-
8	3	26	-	-
9	4	19	-	-
10	-	-	-	-

$E_{min} \geq 1 \text{ lx}$