

ONTEC C C1 60 NM AT C TM-OC.C1ATN600C

Click on the selected icon to download the file:



No: 0125



No: 4397/2021
Valid until:
11.09.2026



No: 88-128463
Valid until:
25.05.2026



No:
B_BK_60112_0424_2024
Valid until:
24.01.2030



No: 0125



No: 2291559.02-
UAE
Valid until:
05.11.2026



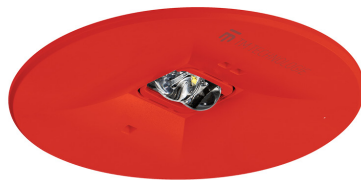
No: 0125



No: DIT_001



No: V1.14



Producer	TM Technologie
Application	escape route lighting
Family	ONTEC C
Colour/Colour - RAL	red , RAL3020
Version	autotest
Operating mode	NM
Duration time	1 h
Protection degree	IP20
Impact protection degree	IK03
Appliance classes	II
Material	plastic
Installation method*	flush-mounted, ceiling
Luminous flux emergency	297 lm
Light source	LED
Maximum light power	2.4 W
Active power	1.2 W
Nominal voltage AC	210-250 V
LED lifetime	50000 h
Colour temperature	5700 K
Minimum temperature	+10 °C
Maximum temperature	+35 °C
Battery	LiFePO4/C (LN) 3.2V 1.5-1.6Ah
Warranty (body, electronics, light source)	36 months
Net dimensions H x Ø [±2 mm]	14 mm x 90 mm



* Some of mounting methods are possible only with additional accessory dedicated for that product.



2,5	9,5	21	-	-
3	11	24	-	-
4	13	29	-	-
5	13,5	32	-	-
6	10,5	34	-	-
7	5	32	-	-
8	3	26	-	-
9	4	19	-	-
10	-	-	-	-

$E_{min} \geq 1 \text{ lx}$