

TM-CB M8 55 Ah ANTHRACITE MAIN STATION TM-CM.0805520DA

Click on the selected icon to download the file:



No: 33A23



No: 5251/2024
Valid until:
20.12.2028



No: 33A23



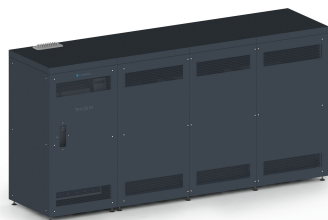
No: 33A23



No: 063-UWB-0591
Valid until:
20.12.2028



No: CBM-01/24



TM-CB M central battery system

modern design, advanced electronics

Power supply, control and monitoring of circuits and emergency luminaires of evacuation lighting in public utility buildings.

- » central supervision of all circuits and emergency luminaires connected to the system
- » system equipped with batteries that provide the appropriate amount of energy needed for a specific time of operation of emergency luminaires
- » intelligent monitoring systems that provide information on the condition of batteries, luminaires, and possible faults
- » various system configurations, which can be adapted to the individual needs of the building, its size and specific requirements for emergency lighting.

Producer	TM Technologie
Application	central battery
Colour/Colour - RAL	anthracite , RAL7016
Appliance classes	I
Protection degree	IP30
Warranty (body, electronics)	60 months
Net dimensions L x W x H [±2 mm]	1980 mm x 600 mm x 1204 mm

POSSIBILITIES

Software included	Visual Base
Maximum number of emergency fittings in the system	400 pcs.
Maximum number of emergency fittings per circuit and channel	20 pcs.
Maximum number of substations and signal distributors	7 pcs.
Maximum distance between control panel and luminaire	300 m
*Maximum distance between control panel and luminaire using the repeater function	1000 m
I/O module using possibility	yes
Allowed topology	parallel connection, star connection
Maximum luminaires power CB 1h	7480 W
Maximum luminaires power CB 2h	3900 W
Maximum luminaires power CB 3h	3150 W
Maximum luminaires power CB 8h	1410 W

TELECOMMUNICATION CABLES

Telecommunication cables with appropriate fire classification and circuit integrity in case of fire (if applicable)

Control panel - substation subdistribution signal distributor cable	1 x 2 x 0,8 mm²
Maximum length of communication cable	1000 m
Maximum resistance	75 Ω
Maximum conductor capacitance	140 nF/km

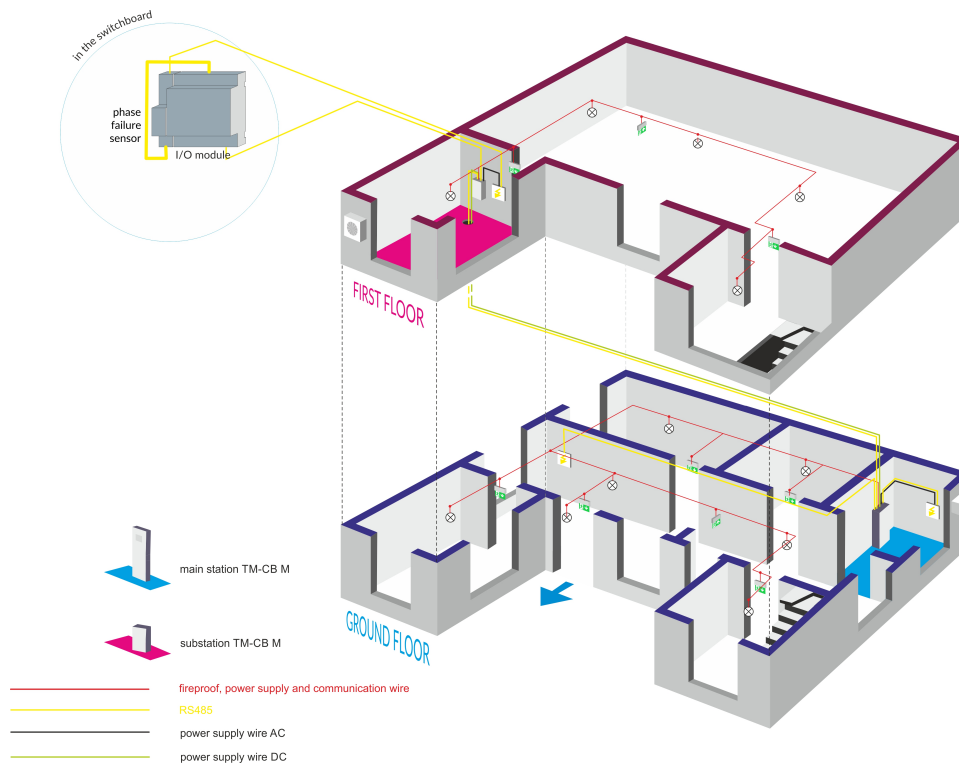
POWER CABLES

Power cables with appropriate fire classification and circuit integrity in case of fire (if applicable)

AC power cable cross section	3 x 2,5 - 10 mm²
Type and cross section of luminaires power cable	3 x 0,5 - 4,0 mm²

Communication protocol **TCP IP/MODBUS, RS485, PLC, USB**

TOPOLOGY



TM-CB M SUB PR12 ANTHRACITE TM-CM.1200012DA



Sub-distribution TM-CB M PR12

The sub-distribution board enables the system to be extended by another 12 circuits.

- » number of circuits: 12
- » maximum number of luminaires on one circle: 20
- » colour: anthracite

TM-CB M SUB PR20 ANTHRACITE TM-CM.2000020DA



Sub-distribution TM-CB M PR20

The sub-distribution board enables the system to be extended by another 20 circuits.

- » number of circuits: 20
- » maximum number of luminaires on one circle: 20
- » colour: anthracite

TM-CB M CIRCUIT MANAGER 1x6A TM-MN.CB.KOB002



Circuit manager MCL-H

A device that controls the operation of output circuits. Depending on the operating mode, it switches on the appropriate type of voltage (AC or DC), controls the monitored CBM luminaires, performs DC current measurements and activates the modified mode.

- » number of electrical circuits: 1
- » maximum load of each circuit: 6 A
- » ground fault detection
- » internal fault detection

TM-CB M CIRCUIT MANAGER 2x3A TM-MN.CB.KOB003



Circuit manager MCL-C

A device that controls the operation of output circuits. Depending on the operating mode, it switches on the appropriate type of voltage (AC or DC), controls the monitored CBM luminaires, performs DC current measurements and activates the modified mode.

- » number of electrical circuits: 2
- » maximum load of each circuit: 3 A
- » ground fault detection
- » internal fault detection

TM-PROG RFID CB|DATA2|DALI TM-MN.RFID002



TM-PROG RFID is a programming device used to read and addresses of lighting fittings that are compliant with TM-CB | DATA2 | DATA2 RADIO| DATA3 | DATA3 RADIO | DALI | DALI-2 systems.

- » Programming is executed in a wireless mode that provides for operation without connecting lighting fittings to a power supply.
- » The programming device has a built-in battery that offers long operating time, and the current consumption is shown on a display.
- » The programming device has an ergonomic casing that protects the device against mechanical damage and prevents accidental slipping from the hand.

FUSE SET CB04 TM-MN.CB04M0



Sub-distribution extension for TM-CB M8|M9|M10

The fuse set is used for expanding system with additional sub-distribution panels. One set allows connecting one sub-distribution panel to the main cabinet.

AKU AGM 12V 55Ah TM-A6L055.UN.B1



BATTERIES | power supply for luminaires included in the system

Battery made in VRLA (AGM) technology, compatible with TM-CB models:

- » TM-CB M 8/55-220-07
- » TM-CB M 9/55-220-15
- » TM-CB L3-48/55 SEL

Producer's datasheet:



VISUALSITE TM-MN.VS001



VisualSite | Emergency Lighting Visualization System

- » interface for integration and management of multiple emergency lighting systems,
- » supervising, monitoring and managing the status of the central battery equipment,
- » accessible via a web browser,
- » compatible with models
TM-CB M1|M2|M3|M4|M5|M6|M7|M8|M9|M10.

*Tablet and computer are not included in the product.